

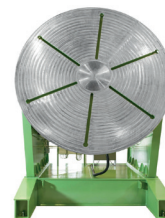
**Kistler Maschinen-
und Anlagenbau GmbH**
Mackstrasse 84
D-88348 Bad Saulgau, Germany
Tel +49 (0) 75 81 4 88 82-0
Fax +49 (0) 75 81 4 88 82-22
info@kistler-machine.de
www.kistler-machine.de

 **KISTLER**
CUTTING AND WELDING TECHNIQUES

BODE[™]
www.bode.co.uk

PRODUCT DESCRIPTION

The tilting welding turntables from the VP series from BODE are used to position workpieces at a working height that is comfortable for welders and to rotate the workpieces for circular seams. They allow controlled movement, allowing easy access to the workpiece during the welding process. The welding turntables of the VP series are available for workpiece weights from 250 kg to 100 tons.

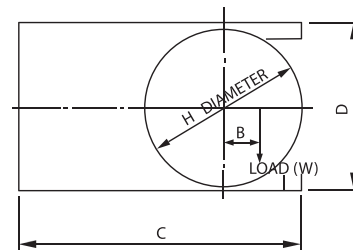
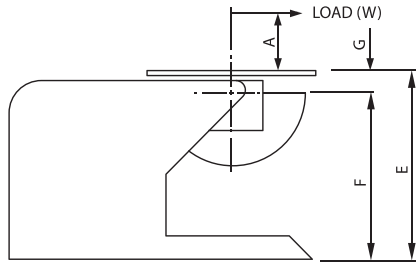


TILTABLE WELDING POSITIONERS OF THE VH/VP RANGE

Kistler Maschinen-
und Anlagenbau GmbH
Mackstrasse 84
D-88348 Bad Saulgau, Germany
Tel +49 (0) 75 81 4 88 82-0
Fax +49 (0) 75 81 4 88 82-22
info@kistler-machine.de
www.kistler-machine.de

 **KISTLER**
CUTTING AND WELDING TECHNIQUES

BODE[™]
www.bode.co.uk



Modell	Rated load of Capacity (kg)	A (mm)	B (mm)	Rated Load Table Horizontal (kg)	Rated Tilt Torque (kg M)	Rated Rotation Torque (kg M)	G (mm)	Rotation Speed	
								min.	max.
5VH	250	150	150	380	62.5	37.5	100	0.07	1.40
10.VH	500	150	150	750	150	75	150	0.07	1.40
10.VP	500	150	150	750	150	75	150	0.07	1.40
20.VH	1000	150	150	1500	300	150	150	0.07	1.40
20.VP	1000	150	150	1500	300	150	150	0.07	1.40
1.VP/2	2000	150	150	3000	600	300	150	0.05	1.00
1.VP/3	3000	150	150	4500	900	450	150	0.05	1.00
1.VP/5	5000	300	150	7500	2400	750	180	0.05	1.00
1.VP/8	8000	300	150	12000	4080	1200	210	0.05	1.00
1.VP/10	10000	400	150	15000	6800	1500	280	0.033	0.66
1.VP/15	15000	500	150	21000	12000	2250	300	0.033	0.66
1.VP/20	20000	500	150	28000	16000	3000	300	0.033	0.66

Modell	Tilt Speed (Secs. per 135°)	Table Diameter (mm)	Table Slots-Bolt Size	Earthing (A)	C (mm)	D (mm)	E (mm)	F (mm)	Weight (kg)
5VH	Hand	610	M16	300	1150	680	900	800	250
10.VH	Hand	920	M16	300	1350	920	1000	850	490
10.VP	30	920	M16	300	1350	920	1000	850	510
20.VH	Hand	920	M16	300	1350	920	1000	850	550
20.VP	30	920	M16	300	1350	920	1000	850	560
1.VP/2	45	1070	M20	300	1610	1250	1012	862	1220
1.VP/3	45	1220	M20	300	1700	1350	1230	1080	1380
1.VP/5	60	1525	M20	300	2200	1600	1200	1020	2200
1.VP/8	64	1525	M24	600	2250	1600	1360	1150	2550
1.VP/10	110	1830	M24	600	2650	2100	1800	1520	6500
1.VP/15	110	2200	M36	600	3200	2200	1800	1500	10000
1.VP/20	150	2400	M36	600	3300	2400	1800	1550	12200

- We reserve the right to alter specifications without prior notice -

TILTABLE WELDING POSITIONERS OF THE VH/VP RANGE