

**Kistler Maschinen-  
und Anlagenbau GmbH**  
Mackstrasse 84  
D-88348 Bad Saulgau, Germany  
Tel +49 (0) 75 81 4 88 82-0  
Fax +49 (0) 75 81 4 88 82-22  
info@kistler-machine.de  
www.kistler-machine.de

## DESCRIPTION

The SCM machines are equipped with two PLC-controlled axis which enables the machine to cut pipes in conjunction with a plasma or oxy-fuel torch.

The work piece is clamped and turned by a driven chuck (axis 1), then the torch is moved over the pipe (axis 2). Optional, a third controlled axis can be added to enable the machine to bevel end cuts (straight, miter and branches).

All programming is menu-driven, the machine is therefore easy to operate.

## APPLICATION:

Pipe cutting machines of the SCM range are used for pipe cutting and profiling in the workshop as well as on site.



SCM 630 prepared for Plasma Cutting, with 3rd controlled axis (allows bevelling of end cuts) and 21 inch through hole chuck.

# SCM RANGE

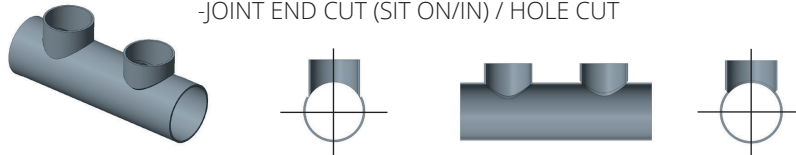
PIPE CUTTING MACHINES

**Kistler Maschinen-  
und Anlagenbau GmbH**  
Mackstrasse 84  
D-88348 Bad Saulgau, Germany  
Tel +49 (0) 75 81 4 88 82-0  
Fax +49 (0) 75 81 4 88 82-22  
info@kistler-machine.de  
www.kistler-machine.de

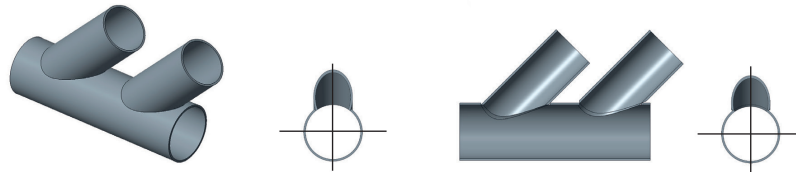
STRAIGHT CUT / MITER CUT



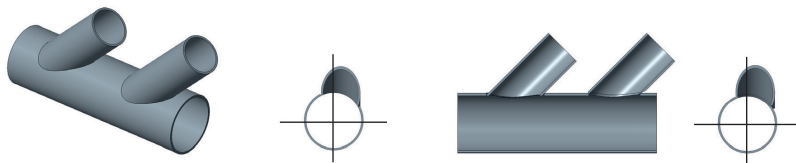
-JOINT END CUT (SIT ON/IN) / HOLE CUT



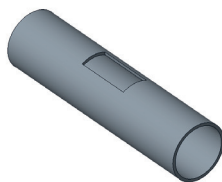
SLANT JOINT END CUT (SIT ON/IN) HOLE CUT



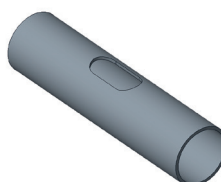
OFF-CENTER SLANT JOINT END CUT (SIT ON/IN) / HOLE CUTS



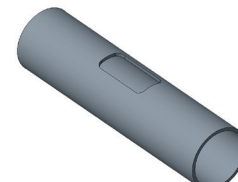
RECTANGLE



RECTANGLE WITH RADIUS



RECTANGLE WITH  
PROGRAMMABLE RADIUS



| Typ     | Workpiece diameter |             | Torch stroke<br>(inch) | Through-hole<br>(inch) | Cutting speed<br>(inch/min) |
|---------|--------------------|-------------|------------------------|------------------------|-----------------------------|
|         | min. (inch)        | max. (inch) |                        |                        |                             |
| SCM 300 | 1                  | 12          | 20                     | 4                      | 75                          |
| SCM 400 | 1                  | 16          | 39                     | 6                      | 75                          |
| SCM 630 | 1                  | 25          | 59                     | 8                      | 75                          |

- We reserve the right to alter specifications without prior notice -

# SCM RANGE

PIPE CUTTING MACHINES